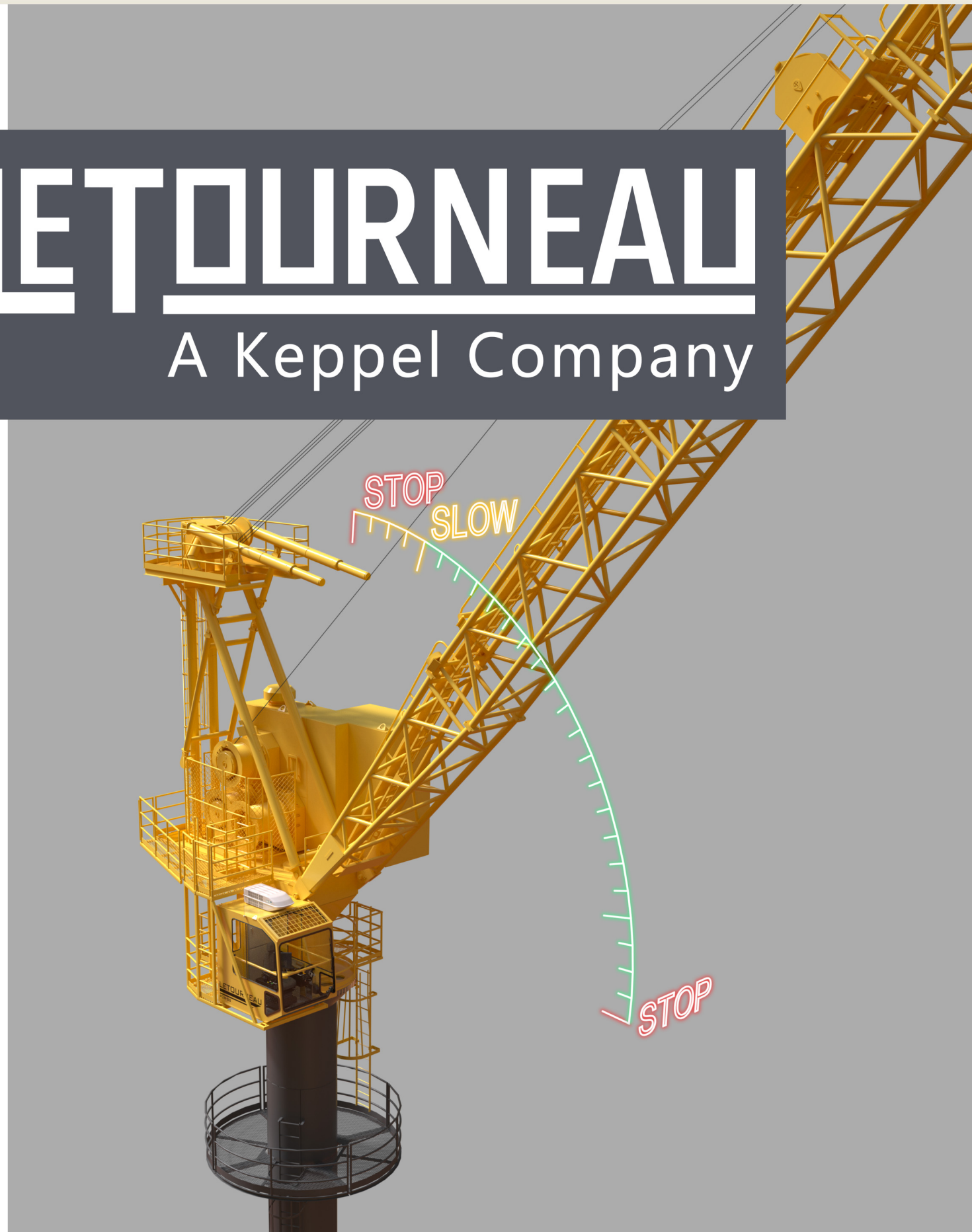


# LETOURNEAU

A Keppel Company



**BOOM LIMITS**  
Upgrade Package  
For LeTourneau™ PCM-SS Cranes

## Features

Monitoring of boom machine safety limits (minimum lower and maximum raise) with redundant sensors and targets.

The “maximum raise machine limit” has a second layer of sensors and targets, to provide additional protection against exceeding safe raise limits.

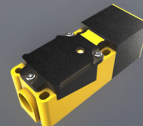
Touchscreen HMI (human machine interface) for configuration of user defined operational limits. This ensures conformance with crane specific load charts, and allows configuration of the boom “slow raise angle”, and “raise limit approach” warning alarm notification.

Systems are factory tested and program traceability compliant.



## Components

- HMI Addition to the Relay/PLC Control Panel
- Limits Interface Panel
- Warning Beacon and Horn
- Inclinometer Enclosure
- Proximity Sensor, Boom Targets, and Isolation Amplifiers
- Installation Hardware and Cables



[SpareParts.usa@keppelletourneau.com](mailto:SpareParts.usa@keppelletourneau.com)

[SpareParts.sg@keppelletourneau.com](mailto:SpareParts.sg@keppelletourneau.com)

[SpareParts.uae@keppelletourneau.com](mailto:SpareParts.uae@keppelletourneau.com)

Copyright 2018 Keppel LeTourneau.  
All rights reserved.

US and Foreign Patents Pending.

Specifications and data presented in this brochure is for general information only and is subject to change without notice and it is not intended for design purposes. Although every effort has been made to maintain the accuracy and reliability of its contents, Keppel LeTourneau in no way assumes responsibility for liability for any loss, damage or injury resulting from the use of the information and data herein.